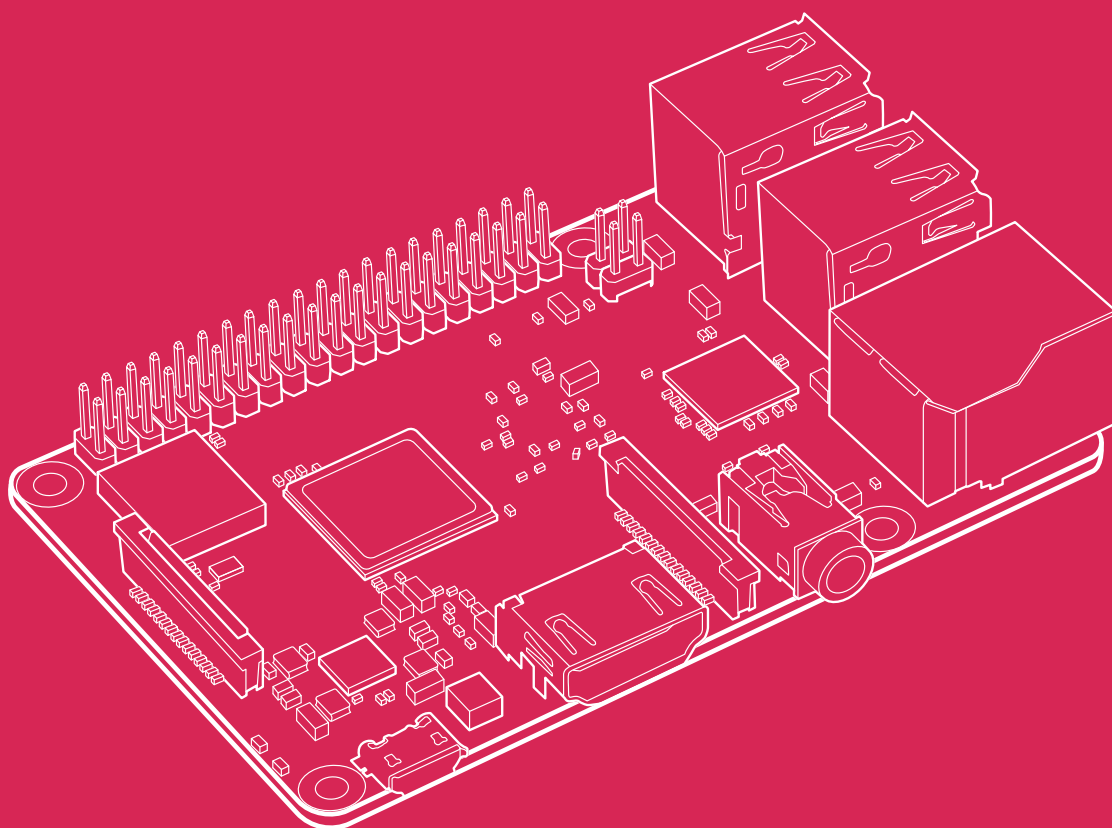




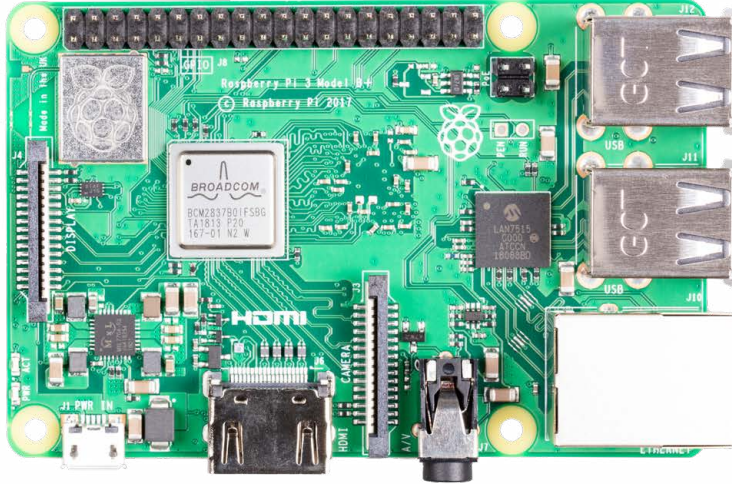
# Raspberry Pi 3 Model B+

Published January 2025



The terms HDMI, HDMI High-Definition Multimedia Interface, and the HDMI Logo are trademarks or registered trademarks of HDMI Licensing Administrator, Inc.

## Overview



Raspberry Pi 3 Model B+ has a 64-bit quad-core processor running at 1.4GHz, dual-band 2.4GHz and 5GHz wireless LAN, Bluetooth 4.2/BLE, Gigabit Ethernet over USB 2.0, and PoE capability via a separate PoE HAT. The dual-band wireless LAN comes with modular compliance certification.

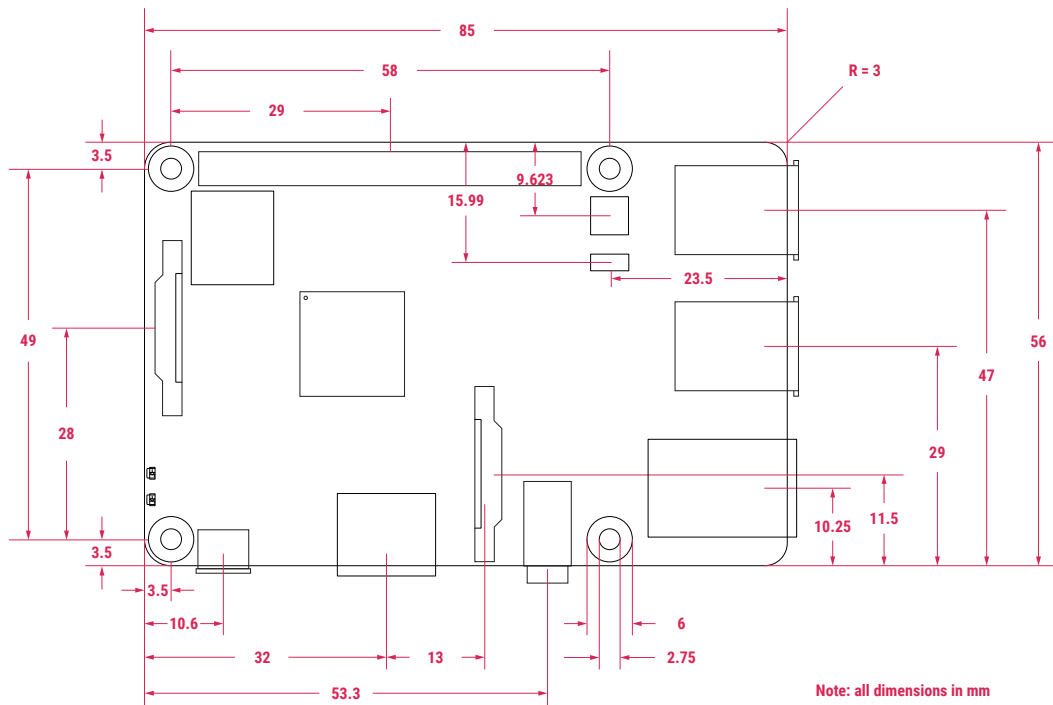
Raspberry Pi 3 Model B+ maintains the same mechanical footprint as both Raspberry Pi 2 Model B and Raspberry Pi 3 Model B.

## Specification

<b>Processor:</b>	Broadcom BCM2837B0, Cortex-A53 64-bit SoC @ 1.4GHz
<b>Memory:</b>	1GB
<b>Connectivity:</b>	<ul style="list-style-type: none"><li>• 2.4 GHz and 5 GHz IEEE 802.11b/g/n/ac wireless LAN, Bluetooth 4.2, BLE</li><li>• Gigabit Ethernet over USB 2.0 (maximum throughput 300Mbps)</li><li>• 4 × USB 2.0 interface</li></ul>
<b>Video and sound:</b>	<ul style="list-style-type: none"><li>• 1 x full size HDMI</li><li>• MIPI DSI display port</li><li>• MIPI CSI camera port</li><li>• 4 pole stereo output and composite video port</li></ul>
<b>Multimedia:</b>	H.264, MPEG-4 decode (1080p30); H.264 encode (1080p30); OpenGL ES 1.1, 2.0 graphics
<b>SD card support:</b>	Micro SD format for loading operating system and data storage
<b>Input Power:</b>	<ul style="list-style-type: none"><li>• 5V/2.5A DC via micro USB connector</li><li>• 5V DC via GPIO header</li><li>• Power over Ethernet (PoE)-enabled (requires separate PoE HAT)</li></ul>
<b>Operating temperature:</b>	0-50°C
<b>MTBF<sup>1</sup> Ground Benign:</b>	378 000 hours
<b>Production lifetime:</b>	Raspberry Pi 3 Model B+ will remain in production until at least January 2028
<b>Compliance:</b>	For a full list of local and regional product approvals, please visit <a href="http://pip.raspberrypi.com">pip.raspberrypi.com</a>
<b>List price:</b>	<b>\$35</b>

<sup>1</sup> Mean Time Between Failure

## Physical specification



## WARNINGS

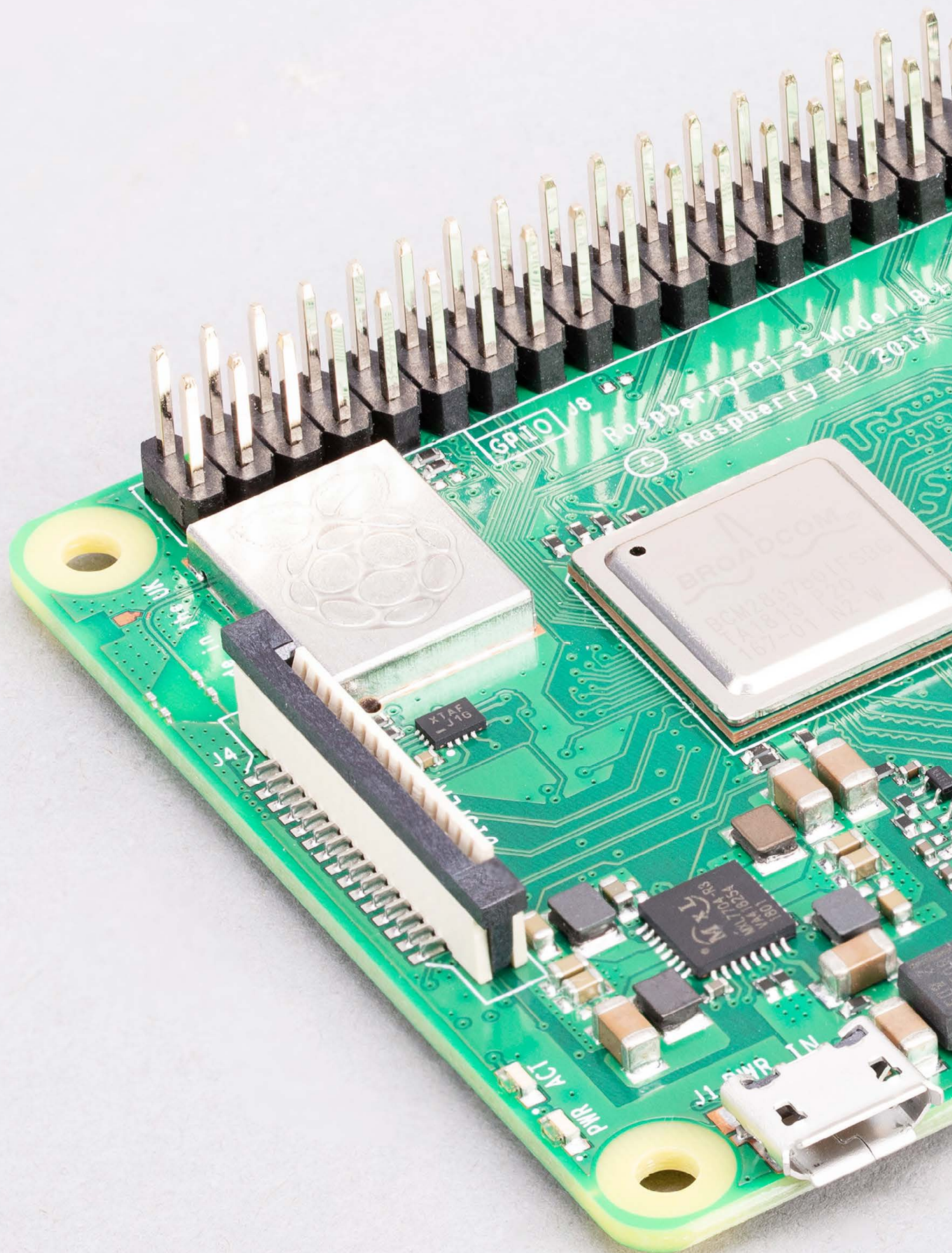
- This product should only be connected to an external power supply rated at 5V/2.5 A DC. Any external power supply used with Raspberry Pi 3 Model B+ shall comply with relevant regulations and standards applicable in the country of intended use.
- This product should be operated in a well-ventilated environment, and if used inside a case, the case should not be covered.
- Whilst in use, this product should be placed on a stable, flat, non-conductive surface, and should not be contacted by conductive items.
- The connection of incompatible devices to the GPIO connection may affect compliance, result in damage to the unit, and invalidate the warranty.
- All peripherals used with this product should comply with relevant standards for the country of use and be marked accordingly to ensure that safety and performance requirements are met. These articles include but are not limited to keyboards, monitors, and mice when used in conjunction with the Raspberry Pi.
- The cables and connectors of all peripherals used with this product must have adequate insulation so that relevant safety requirements are met.

## SAFETY INSTRUCTIONS

**To avoid malfunction or damage to this product, please observe the following:**

- Do not expose to water or moisture, or place on a conductive surface whilst in operation.
- Do not expose to heat from any source; Raspberry Pi 3 Model B+ is designed for reliable operation at normal ambient temperatures.
- Do not expose the printed circuit board to high-intensity light sources (e.g. xenon flash or laser) whilst in operation.
- Take care whilst handling to avoid mechanical or electrical damage to the printed circuit board and connectors.
- Whilst it is powered, avoid handling the printed circuit board, or only handle it by the edges to minimise the risk of electrostatic discharge damage.







Raspberry Pi is a trademark of Raspberry Pi Ltd

---